

# **HOW RHODE ISLAND COMPARES**

2007 Edition

STATE AND LOCAL TAXES

PER CAPITA

PER \$1,000 OF PERSONAL INCOME

*Compiled as a public service by:*

Rhode Island Public Expenditure Council

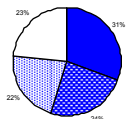
**Table 1**  
**State and Local Revenues Per \$1,000 of Personal Income and Per Capita**  
**How Rhode Island Compares to the United States Average**  
**Fiscal Year 2005**

	Per \$1,000 of Personal Income				Per Capita			
	US	RI	Rank	% of US	US	RI	Rank	% of US
<b>Selected Tax Revenues</b>								
<b>Property</b>	\$34.55	\$49.60	6	143.6%	\$1,132	\$1,695	7	149.7%
<b>Individual Income</b>	24.80	27.21	21	109.7%	813	930	16	114.4%
<b>General Sales</b>	27.06	23.01	37	85.0%	887	786	29	88.7%
<b>Total State and Local Taxes</b>	\$112.84	\$122.68	7	108.7%	\$3,698	\$4,191	9	113.3%
<b>Charges and Misc Revenues</b>	\$50.06	\$42.03	43	84.0%	\$1,640	\$1,436	40	87.5%
<b>All Revenues*</b>	\$259.67	\$265.26	23	102.2%	\$8,509	\$9,062	8	106.5%

\*Revenues include: intergovernmental revenues; all tax revenues; charges and misc. general revenues; utility, liquor store, and insurance trust revenues.

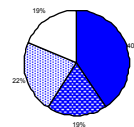
Source: US Census Bureau, Government Finance, FY 2005 Data, Bureau of Economic Analysis for personal income data, RIPEC calculations

**US Tax Revenue by Source - FY 2005**



■ Property ■ General sales ■ Individual income □ All other taxes

**RI Tax Revenue by Source - FY 2005**



■ Property ■ General sales ■ Individual income □ All other taxes

**Table 2**  
**All State and Local Tax Collections**  
**Per \$1,000 of Personal Income**  
**Fiscal Years 2005 and 1995**

	FY 2005		FY 1995	
	Amount	Rank	Amount	Rank
United States*	\$112.84	-	\$113.23	-
Wyoming	150.76	1	114.97	19
New York	149.70	2	149.84	2
Hawaii	134.30	3	123.36	6
Maine	133.04	4	127.04	5
Alaska	132.40	5	178.25	1
Vermont	131.91	6	122.29	8
<b>Rhode Island**</b>	<b>122.68</b>	<b>7</b>	<b>117.32</b>	<b>14</b>
Wisconsin	121.28	8	131.95	3
West Virginia	121.14	9	114.17	22
New Mexico	119.69	10	121.96	9
Connecticut	119.17	11	122.64	7
Ohio	118.31	12	110.77	27
Nebraska	117.97	13	115.40	17
Louisiana	117.44	14	99.73	45
New Jersey	117.19	15	118.16	13
California	115.62	16	111.13	26
Utah	115.06	17	116.64	15
North Dakota	114.62	18	114.20	21
Nevada	113.97	19	110.20	29
Indiana	113.78	20	106.19	37
Minnesota	113.76	21	130.34	4
Arkansas	113.67	22	101.30	44
Delaware	111.85	23	114.82	20
Arizona	111.69	24	118.52	12
Pennsylvania	111.27	25	109.64	30
Illinois	111.09	26	108.50	32
Michigan	110.21	27	107.57	36
Kansas	109.75	28	112.20	24
Kentucky	109.60	29	115.60	16
Idaho	109.41	30	111.96	25
Maryland	108.34	31	108.19	34
North Carolina	108.25	32	108.43	33
Mississippi	107.86	33	109.37	31
Massachusetts	107.31	34	112.90	23
Iowa	106.38	35	121.08	10
Florida	105.95	36	103.42	40
Washington	105.91	37	120.16	11
Montana	105.57	38	115.24	18
South Carolina	103.85	39	103.74	39
Georgia	103.83	40	107.58	35
Virginia	103.69	41	99.38	46
Oklahoma	100.70	42	105.22	38
Missouri	100.40	43	103.01	42
Texas	100.12	44	103.23	41
Oregon	99.77	45	110.34	28
Colorado	95.22	46	102.04	43
Alabama	92.27	47	91.91	49
Tennessee	91.68	48	88.90	50
New Hampshire	91.43	49	96.49	48
South Dakota	87.46	50	98.47	47

\* US average includes District of Columbia

\*\*Rhode Island Ranked 7th in FY 2004

Source: US Bureau of the Census, the Bureau of Economic Analysis, RIPEC calculations

**Table 3**  
**All State and Local Tax Collections**  
**Per Capita**  
**Fiscal Years 2005 and 1995**

	FY 2005		FY 1995	
	Amount	Rank	Amount	Rank
United States*	\$3,698	-	\$2,514	-
New York	5,752	1	3,933	2
Connecticut	5,398	2	3,687	3
Wyoming	5,251	3	2,358	24
New Jersey	4,890	4	3,285	4
Massachusetts	4,470	5	2,980	7
Alaska	4,443	6	4,460	1
Hawaii	4,338	7	3,058	5
Maryland	4,276	8	2,758	9
<b>Rhode Island**</b>	<b>4,191</b>	<b>9</b>	<b>2,660</b>	<b>12</b>
Vermont	4,137	10	2,469	17
Minnesota	4,088	11	2,996	6
California	4,055	12	2,570	14
Maine	3,960	13	2,466	18
Delaware	3,894	14	2,704	11
Wisconsin	3,872	15	2,831	8
Illinois	3,849	16	2,619	13
Nevada	3,749	17	2,567	15
Nebraska	3,746	18	2,398	22
Pennsylvania	3,710	19	2,477	16
Virginia	3,657	20	2,307	27
Washington	3,651	21	2,728	10
Ohio	3,637	22	2,405	21
Michigan	3,494	23	2,454	20
Kansas	3,415	24	2,369	23
Indiana	3,405	25	2,201	33
Florida	3,369	26	2,252	30
Colorado	3,363	27	2,333	25
North Dakota	3,343	28	2,183	34
New Hampshire	3,306	29	2,267	29
Iowa	3,273	30	2,466	19
Louisiana	3,173	31	1,839	46
New Mexico	3,151	32	2,147	36
North Carolina	3,149	33	2,210	32
Arizona	3,079	34	2,292	28
West Virginia	3,060	35	1,955	42
Oregon	3,052	36	2,309	26
Texas	3,015	37	2,066	38
Georgia	3,010	38	2,215	31
Missouri	2,997	39	2,148	35
Kentucky	2,939	40	2,101	37
Utah	2,933	41	2,059	40
Idaho	2,926	42	2,062	39
Montana	2,913	43	2,038	41
Arkansas	2,902	44	1,765	49
Oklahoma	2,843	45	1,935	43
South Carolina	2,779	46	1,922	44
South Dakota	2,715	47	1,914	45
Tennessee	2,685	48	1,790	47
Mississippi	2,575	49	1,776	48
Alabama	2,569	50	1,713	50

\* US average includes District of Columbia

\*\*Rhode Island Ranked 7th in FY 2004

Source: US Bureau of the Census, the Bureau of Economic Analysis, RIPEC calculations

**Table 4**  
**State and Local Property Tax Collections**  
**Per \$1,000 of Personal Income**  
**Fiscal Years 2005 and 1995**

	FY 2005		FY 1995	
	Amount	Rank	Amount	Rank
United States*	\$34.55	-	\$34.87	-
New Hampshire	56.09	1	61.85	1
Maine	54.85	2	52.65	4
Vermont	54.12	3	54.64	3
New Jersey	52.86	4	55.38	2
Wyoming	50.26	5	46.21	9
<b>Rhode Island**</b>	<b>49.60</b>	<b>6</b>	<b>50.67</b>	<b>5</b>
New York	46.01	7	47.86	8
Connecticut	45.13	8	46.20	10
Wisconsin	44.17	9	48.04	7
Texas	43.85	10	37.86	18
Illinois	42.25	11	41.56	14
Indiana	40.73	12	35.23	23
Michigan	40.34	13	30.13	33
Alaska	40.09	14	44.78	11
Montana	38.67	15	49.73	6
Massachusetts	38.59	16	39.42	17
Nebraska	37.65	17	43.47	12
Iowa	36.20	18	42.40	13
Kansas	36.14	19	35.70	21
Florida	36.09	20	37.10	20
Ohio	33.96	21	31.90	26
North Dakota	33.49	22	32.34	25
South Carolina	32.90	23	30.32	31
Pennsylvania	32.38	24	31.14	28
Oregon	32.01	25	37.70	19
Virginia	31.45	26	30.36	30
Arizona	31.23	27	34.78	24
Georgia	31.03	28	30.30	32
Washington	30.60	29	35.46	22
South Dakota	30.35	30	39.81	16
Idaho	30.18	31	29.58	34
Colorado	30.00	32	31.83	27
Nevada	29.25	33	22.76	40
Minnesota	28.50	34	40.48	15
Mississippi	28.33	35	25.59	38
Utah	28.24	36	29.04	36
Missouri	27.13	37	26.40	37
California	26.86	38	30.86	29
North Carolina	25.57	39	23.72	39
Maryland	25.36	40	29.08	35
Tennessee	22.32	41	20.24	43
West Virginia	22.01	42	22.13	41
Kentucky	20.08	43	18.74	44
Louisiana	19.95	44	16.53	47
Hawaii	19.89	45	20.80	42
Oklahoma	17.18	46	17.44	45
New Mexico	17.02	47	14.53	49
Delaware	16.58	48	16.75	46
Arkansas	16.55	49	15.03	48
Alabama	14.15	50	11.59	50

\* US average includes District of Columbia

\*\*Rhode Island Ranked 5th in FY 2004

Source: US Bureau of the Census, the Bureau of Economic Analysis, RIPEC calculations

**Table 5**  
**State and Local Property Tax Collections**  
**Per Capita**  
**Fiscal Years 2005 and 1995**

	FY 2005		FY 1995	
	Amount	Rank	Amount	Rank
United States*	\$1,132	-	\$774	-
New Jersey	2,206	1	1,540	1
Connecticut	2,044	2	1,389	3
New Hampshire	2,028	3	1,453	2
New York	1,768	4	1,256	4
Wyoming	1,751	5	948	12
Vermont	1,697	6	1,103	7
<b>Rhode Island**</b>	<b>1,695</b>	<b>7</b>	<b>1,149</b>	<b>5</b>
Maine	1,632	8	1,022	10
Massachusetts	1,607	9	1,040	8
Illinois	1,464	10	1,003	11
Wisconsin	1,410	11	1,031	9
Alaska	1,345	12	1,121	6
Texas	1,320	13	758	21
Michigan	1,279	14	687	30
Indiana	1,219	15	730	24
Nebraska	1,195	16	903	14
Florida	1,148	17	808	17
Kansas	1,125	18	754	22
Iowa	1,114	19	863	16
Virginia	1,109	20	705	27
Pennsylvania	1,079	21	703	28
Montana	1,067	22	879	15
Colorado	1,059	23	728	25
Washington	1,055	24	805	18
Ohio	1,044	25	693	29
Minnesota	1,024	26	931	13
Maryland	1,001	27	741	23
Oregon	979	28	789	19
North Dakota	977	29	618	33
Nevada	962	30	530	37
South Dakota	942	31	774	20
California	942	32	714	26
Georgia	899	33	624	32
South Carolina	880	34	562	34
Arizona	861	35	672	31
Missouri	810	36	550	35
Idaho	807	37	545	36
North Carolina	744	38	483	40
Utah	720	39	513	39
Mississippi	676	40	416	41
Tennessee	654	41	408	42
Hawaii	643	42	516	38
Delaware	577	43	394	43
West Virginia	556	44	379	44
Louisiana	539	45	305	47
Kentucky	538	46	340	45
Oklahoma	485	47	321	46
New Mexico	448	48	256	49
Arkansas	422	49	262	48
Alabama	394	50	216	50

\* US average includes District of Columbia

\*\*Rhode Island Ranked 5th in FY 2004

Source: US Bureau of the Census, the Bureau of Economic Analysis, RIPEC calculations

**Table 6**  
**State and Local Individual Income Tax Collections**  
**Per \$1,000 of Personal Income**  
**Fiscal Years 2005 and 1995**

	FY 2005		FY 1995	
	Amount	Rank	Amount	Rank
United States*	\$24.80	-	\$23.64	-
New York	46.95	1	44.61	1
Oregon	43.38	2	45.56	2
Maryland	41.49	3	39.95	3
Ohio	37.09	4	33.71	9
Massachusetts	36.16	5	37.26	4
Minnesota	34.42	6	34.57	7
California	33.90	7	25.11	22
Kentucky	33.90	8	34.44	8
Hawaii	33.59	9	31.46	11
North Carolina	33.41	10	32.05	10
Maine	33.11	11	26.59	18
Delaware	31.82	12	35.15	6
Connecticut	31.74	13	25.13	21
Virginia	31.31	14	28.09	15
Wisconsin	30.97	15	35.78	5
Utah	30.35	16	29.74	13
Pennsylvania	27.71	17	25.51	20
Georgia	27.67	18	25.92	19
Montana	27.66	19	24.19	27
Idaho	27.22	20	28.00	16
<b>Rhode Island</b>	<b>27.21</b>	<b>21</b>	<b>23.63</b>	<b>28</b>
Arkansas	26.46	22	24.81	26
Indiana	25.66	23	30.42	12
Vermont	25.64	24	21.20	33
West Virginia	25.58	25	22.68	31
Iowa	25.35	26	28.32	14
Nebraska	24.97	27	21.78	32
Missouri	24.95	28	25.03	23
Oklahoma	24.68	29	23.50	29
Kansas	23.98	30	22.76	30
South Carolina	23.69	31	24.33	25
Colorado	22.90	32	24.54	24
New Jersey	22.65	33	20.67	34
New Mexico	21.42	34	20.00	35
Alabama	20.88	35	19.51	36
Michigan	20.50	36	27.04	17
Louisiana	19.65	37	13.26	40
Illinois	17.94	38	18.63	37
Arizona	17.36	39	18.18	38
Mississippi	16.91	40	15.60	17
North Dakota	13.08	41	11.67	41
New Hampshire	1.43	42	1.40	42
Tennessee	0.89	43	0.96	43

\* US average includes District of Columbia

\*\*Rhode Island Ranked 20th in FY 2004

Source: US Bureau of the Census, the Bureau of Economic Analysis, RIPEC calculations

**Table 7**  
**State and Local Individual Income Tax Collections**  
**Per Capita**  
**Fiscal Years 2005 and 1995**

	FY 2005		FY 1995	
	Amount	Rank	Amount	Rank
United States*	\$813	-	\$525	-
New York	1,804	1	1,171	1
Maryland	1,638	2	1,018	2
Massachusetts	1,506	3	984	3
Connecticut	1,438	4	756	9
Oregon	1,327	5	891	4
Minnesota	1,237	6	795	6
California	1,189	7	581	16
Ohio	1,140	8	732	10
Delaware	1,108	9	828	5
Virginia	1,104	10	652	12
Hawaii	1,085	11	780	7
Wisconsin	989	12	768	8
Maine	986	13	516	25
North Carolina	972	14	653	11
New Jersey	945	15	575	19
<b>Rhode Island**</b>	<b>930</b>	<b>16</b>	<b>536</b>	<b>21</b>
Pennsylvania	924	17	576	18
Kentucky	909	18	626	14
Colorado	809	19	561	20
Vermont	804	20	428	32
Georgia	802	21	533	22
Nebraska	793	22	453	28
Iowa	780	23	577	17
Utah	774	24	525	23
Indiana	768	25	631	13
Montana	763	26	428	33
Kansas	746	27	481	27
Missouri	745	28	522	24
Idaho	728	29	516	26
Oklahoma	697	30	432	31
Arkansas	676	31	422	34
Michigan	650	32	617	15
West Virginia	646	33	388	35
South Carolina	634	34	451	29
Illinois	622	35	450	30
Alabama	581	36	364	36
New Mexico	564	37	351	38
Louisiana	531	38	244	40
Arizona	478	39	352	37
Mississippi	404	40	253	39
North Dakota	381	41	223	41
New Hampshire	52	42	33	42
Tennessee	26	43	19	43

\* US average includes District of Columbia

\*\*Rhode Island Ranked 17th in FY 2004

Source: US Bureau of the Census, the Bureau of Economic Analysis, RIPEC calculations



**Table 8**  
**State and Local General Sales Tax Collections**  
**Per \$1,000 of Personal Income**  
**Fiscal Years 2005 and 1995**

	FY 2005		FY 1995	
	Amount	Rank	Amount	Rank
United States*	\$27.06	-	\$27.45	-
Hawaii	51.95	1	46.33	3
Washington	49.07	2	57.22	1
Arkansas	46.97	3	35.94	10
Louisiana	46.62	4	40.42	7
Tennessee	43.39	5	40.95	6
Arizona	42.81	6	42.36	5
New Mexico	42.51	7	51.02	2
Nevada	38.59	8	42.46	4
Wyoming	38.50	9	27.83	21
Mississippi	37.28	10	38.65	25
Florida	35.54	11	35.65	11
South Dakota	34.66	12	33.05	13
Utah	34.37	13	37.57	9
Nebraska	31.67	14	26.97	24
California	29.63	15	29.78	17
Idaho	29.52	16	26.88	27
Kansas	29.46	17	30.38	16
Texas	29.32	18	33.36	12
Oklahoma	29.29	19	31.66	15
Georgia	28.95	20	32.69	14
New York	28.43	21	26.93	26
Missouri	28.08	22	29.63	18
Alabama	27.90	23	28.44	20
Ohio	27.37	24	23.15	36
South Carolina	26.67	25	27.12	22
Indiana	26.67	26	22.53	37
Colorado	26.66	27	28.49	19
North Dakota	25.88	28	25.53	30
Michigan	25.21	29	26.93	25
North Carolina	24.75	30	24.93	32
Wisconsin	24.36	31	24.69	33
West Virginia	23.91	32	25.35	31
Maine	23.83	33	26.99	23
Iowa	23.67	34	26.33	28
Kentucky	23.29	35	23.96	35
Minnesota	23.18	36	26.02	29
<b>Rhode Island**</b>	<b>23.01</b>	<b>37</b>	<b>20.34</b>	<b>40</b>
Connecticut	20.61	38	24.05	34
Pennsylvania	19.97	39	20.69	39
Illinois	18.90	40	21.18	38
New Jersey	18.04	41	18.71	41
Vermont	16.15	42	14.71	45
Virginia	15.17	43	16.26	42
Massachusetts	14.52	44	15.48	43
Maryland	13.10	45	15.18	44
Alaska	7.07	46	7.05	46

\* US average includes District of Columbia

\*\*Rhode Island Ranked 36th in FY 2004

Source: US Bureau of the Census, the Bureau of Economic Analysis, RIPEC calculations

**Table 9**  
**State and Local General Sales Tax Collections**  
**Per Capita**  
**Fiscal Years 2005 and 1995**

	FY 2005		FY 1995	
	Amount	Rank	Amount	Rank
United States*	\$887	-	\$610	-
Washington	1,692	1	1,299	1
Hawaii	1,678	2	1,148	2
Wyoming	1,341	3	571	24
Tennessee	1,271	4	825	5
Nevada	1,269	5	989	3
Louisiana	1,260	6	745	8
Arkansas	1,199	7	626	19
Arizona	1,180	8	819	6
Florida	1,130	9	776	7
New Mexico	1,119	10	898	4
New York	1,092	11	707	10
South Dakota	1,076	12	642	16
California	1,039	13	689	11
Nebraska	1,006	14	560	25
Colorado	942	15	652	15
Connecticut	933	16	723	9
Kansas	917	17	641	17
Mississippi	890	18	628	18
Texas	883	19	668	13
Utah	876	20	663	14
Ohio	841	21	503	33
Georgia	839	22	673	12
Missouri	838	23	618	20
Minnesota	833	24	598	22
Oklahoma	827	25	582	23
Michigan	799	26	614	21
Indiana	798	27	467	38
Idaho	789	28	495	35
<b>Rhode Island**</b>	<b>786</b>	<b>29</b>	<b>461</b>	<b>39</b>
Wisconsin	778	30	530	28
Alabama	777	31	530	27
North Dakota	755	32	488	36
New Jersey	753	33	520	30
Iowa	728	34	536	26
North Carolina	720	35	508	32
South Carolina	714	36	503	34
Maine	709	37	524	29
Pennsylvania	666	38	467	37
Illinois	655	39	511	31
Kentucky	624	40	435	40
Massachusetts	605	41	409	42
West Virginia	604	42	434	41
Virginia	535	43	377	44
Maryland	517	44	387	43
Vermont	506	45	297	45
Alaska	237	46	177	46

\* US average includes District of Columbia

\*\*Rhode Island Ranked 29th in FY 2004

Source: US Bureau of the Census, the Bureau of Economic Analysis, RIPEC calculations

**Table 10**  
**All State and Local Tax Collections,**  
**Charges and Misc. General Revenues**  
**Per \$1,000 of Personal Income**  
**Fiscal Years 2005 and 1995**

	FY 2005		FY 1995	
	Amount	Rank	Amount	Rank
United States*	\$162.90	-	\$161.25	-
Alaska	326.67	1	514.46	1
Wyoming	240.87	2	211.41	2
New York	195.19	3	197.17	3
New Mexico	192.27	4	196.79	4
West Virginia	192.16	5	168.81	18
Delaware	186.30	6	189.51	6
Utah	185.80	7	177.74	8
Hawaii	184.54	8	173.46	12
Maine	183.69	9	169.91	16
Louisiana	180.89	10	163.30	23
South Carolina	180.59	11	164.64	21
Vermont	179.90	12	169.07	17
North Dakota	176.98	13	176.69	9
Nebraska	171.85	14	167.53	20
Indiana	170.20	15	158.85	29
Ohio	170.12	16	152.20	38
California	169.97	17	161.57	25
Mississippi	169.80	18	168.31	19
Idaho	168.00	19	170.28	15
Wisconsin	167.84	20	178.01	7
Montana	166.15	21	174.98	11
Nevada	165.51	22	156.12	31
Arkansas	165.06	23	145.74	43
Iowa	164.88	24	176.69	10
Michigan	164.83	25	155.06	33
<b>Rhode Island</b>	<b>164.70</b>	<b>26</b>	<b>155.12</b>	<b>32</b>
Minnesota	163.30	27	189.58	5
Oregon	162.32	28	171.15	14
Florida	160.99	29	157.64	30
Alabama	159.19	30	150.56	39
Kentucky	158.35	31	164.34	22
Kansas	158.07	32	162.28	24
North Carolina	157.89	33	154.41	35
Pennsylvania	156.62	34	148.54	42
Washington	156.44	35	173.27	13
Arizona	155.60	36	159.92	27
New Jersey	153.68	37	160.53	26
Oklahoma	152.38	38	154.63	34
Virginia	152.25	39	141.91	47
Colorado	149.91	40	154.34	36
Texas	149.66	41	149.78	40
Georgia	149.61	42	159.26	28
Massachusetts	149.01	43	152.26	37
Illinois	147.76	44	144.85	44
Missouri	146.59	45	140.95	48
Connecticut	146.12	46	149.03	41
Maryland	143.85	47	143.59	46
Tennessee	140.99	48	132.70	50
South Dakota	131.10	49	143.82	45
New Hampshire	128.87	50	136.92	49

\* US average includes District of Columbia

\*\*Rhode Island Ranked 26th in FY 2004

Source: US Bureau of the Census, the Bureau of Economic Analysis, RIPEC calculations

**Table 11**  
**All State and Local Tax Collections,**  
**Charges and Misc. General Revenues**  
**Per Capita**  
**Fiscal Years 2005 and 1995**

	FY 2005		FY 1995	
	Amount	Rank	Amount	Rank
United States*	\$5,338	-	\$3,580	-
Alaska	10,963	1	12,872	1
Wyoming	8,390	2	4,336	7
New York	7,500	3	5,175	2
Connecticut	6,619	4	4,481	3
Delaware	6,485	5	4,463	4
New Jersey	6,413	6	4,462	5
Massachusetts	6,207	7	4,019	9
California	5,961	8	3,736	12
Hawaii	5,961	9	4,300	8
Minnesota	5,868	10	4,358	6
Maryland	5,677	11	3,660	13
Vermont	5,642	12	3,413	25
<b>Rhode Island</b>	<b>5,627</b>	<b>13</b>	<b>3,518</b>	<b>19</b>
Maine	5,467	14	3,299	29
Nebraska	5,457	15	3,481	21
Nevada	5,445	16	3,637	14
Washington	5,393	17	3,934	10
Virginia	5,369	18	3,295	30
Wisconsin	5,359	19	3,820	11
Colorado	5,294	20	3,529	18
Ohio	5,229	21	3,305	28
Michigan	5,226	22	3,537	17
Pennsylvania	5,222	23	3,355	27
North Dakota	5,162	24	3,378	26
Illinois	5,120	25	3,496	20
Florida	5,119	26	3,433	23
Indiana	5,094	27	3,292	31
Iowa	5,072	28	3,598	15
New Mexico	5,062	29	3,464	22
Oregon	4,966	30	3,582	16
Kansas	4,919	31	3,427	24
Louisiana	4,887	32	3,010	40
West Virginia	4,853	33	2,891	44
South Carolina	4,832	34	3,050	39
Utah	4,736	35	3,137	35
New Hampshire	4,659	36	3,217	33
North Carolina	4,592	37	3,147	34
Montana	4,584	38	3,094	37
Texas	4,507	39	2,998	41
Idaho	4,493	40	3,137	36
Alabama	4,433	41	2,806	46
Missouri	4,375	42	2,939	43
Georgia	4,337	43	3,278	32
Oklahoma	4,302	44	2,844	45
Arizona	4,290	45	3,092	38
Kentucky	4,246	46	2,986	42
Arkansas	4,213	47	2,539	50
Tennessee	4,130	48	2,672	49
South Dakota	4,069	49	2,796	47
Mississippi	4,055	50	2,734	48

\* US average includes District of Columbia

\*\*Rhode Island Ranked 12th in FY 2004

Source: US Bureau of the Census, the Bureau of Economic Analysis, RIPEC calculations

## How Rhode Island Compares

### What is RIPEC?

RIPEC is an independent, nonpartisan and nonprofit public policy research and education organization dedicated to the advancement of effective, efficient and equitable government in Rhode Island.

RIPEC works for better government in two ways.

1. RIPEC publications present facts, identify problems, explore alternatives and propose actions to improve government.
2. RIPEC provides research assistance in support of public and private sector efforts to improve government.

To learn more about RIPEC, including how you can support its activities, write to:

Rhode Island Public Expenditure Council,  
300 Richmond Street, Suite 200, Providence, RI  
02903. You may also contact RIPEC by phone  
(401) 521-6320, by Fax (401) 751-1915 - or you can  
visit our website [www.ripec.org](http://www.ripec.org).

Fiscal Year 2005 is the most recent year for which comparative state and local revenue data for the 50 states were available.

Calculations were made using July 2005 population estimates (Source: U.S. Census Bureau Population Division, released December, 2006) and calendar year 2004 personal income data (Source: U.S. Bureau of Economic Analysis, as of May 2007).